

VELOU VELOU VELOU

VIOLON I

CHANSON DU CARNAVAL 1922
WITH STRINGS

PAROLES : M. RONDELLE ET A. FENOUILLE

MUSIQUE : HIACYNTHÉ TARELLI

ARR. FRED D'HULSTER

BIGUINE $\text{♩} = 102$

5

(A)

15

ARCO

(B)



UP SWING IN 4 $\text{♩} = \text{♩} = 102$

$\text{♩} = \text{♩} = 102$

POCO FORTE

(C)

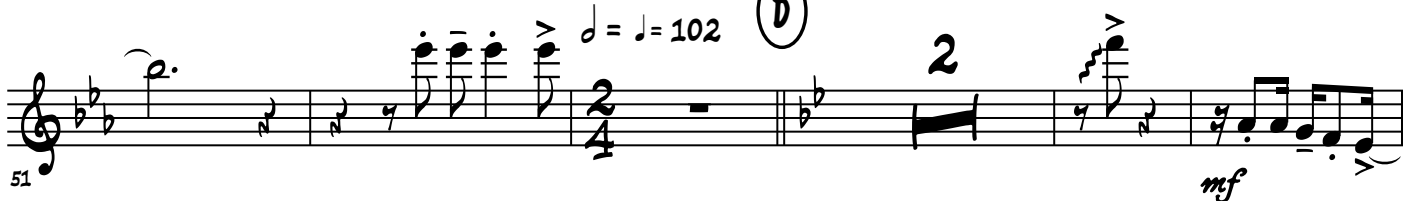


BIGUINE

$\text{♩} = \text{♩} = 102$

(D)

2



mf

2



UP SWING $\text{♩} = 102$

(E)



VELOU VELOU VELOU

2



74



80

BIGUINE ♩ = 102



mf



100

UP SWING ♩ = 102 (H)



109



115

BIGUINE ♩ = 102 (I)



124

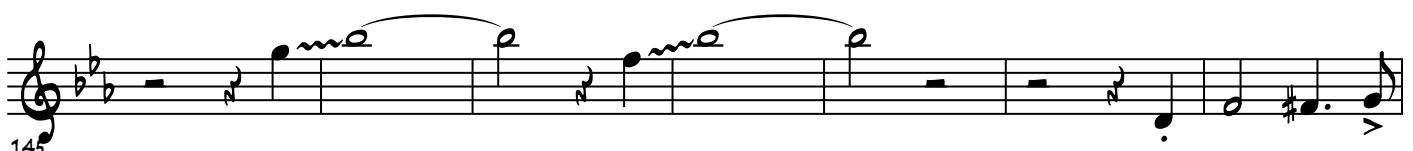
STOP CHORUS

(EXCLAMATIONS FESTIVES, ENCOURAGEMENTS BRUYANTS DES MUSICIENS, AMBIANCE DE CARNAVAL...)

UP SWING ♩ = 102 (J)



136



145

3

3

152

(K) COUPLET 3
15

181

187

193

200

(N)

214

(BINAIRE)