

EN CALAN DE CIMIES

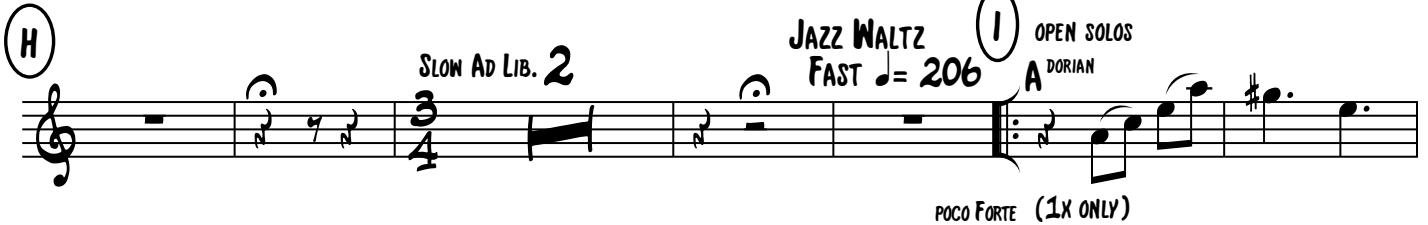
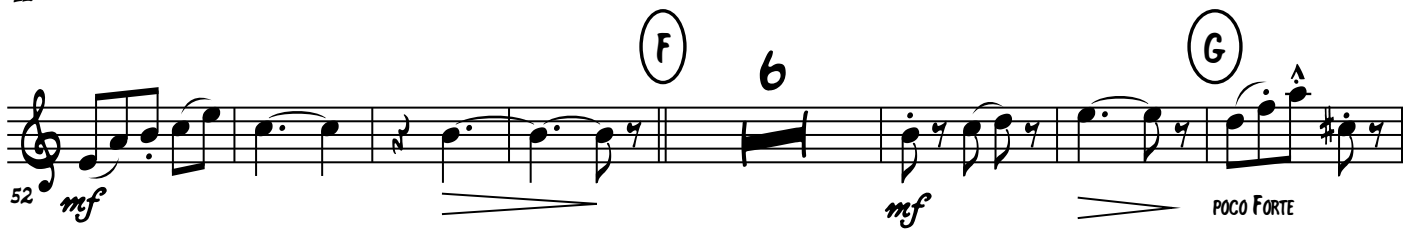
ALTO SAX 2

TRADITIONNEL

ARR. FRED D'HULSTER

♩ = 196 STRAIGHT ♩'s

9



EN CALAN DE CIMIES

2 (J)

D^{MIN}7 **A^{DORIAN}** **F⁷**

PLAY (AS. FIRST SOLO)

E⁷ **A^{DORIAN}** (K)

103 *f*

111

118 3

(L) 127 *mf*

133

(M) 4x4 BATTERIE/CBASSE 7 (N) **BASS SOLO** 5/8

ff LONG FALL

(O) ♩ = 196 14 (P) *mf* POCO FORTE

175 (Q) 4 *mf*

RIT. A TEMPO 6 RIT. 185 "DOUN LOU DESTIN N'EN MENA" *mf*