

# VELOU VELOU VELOU

CHANT

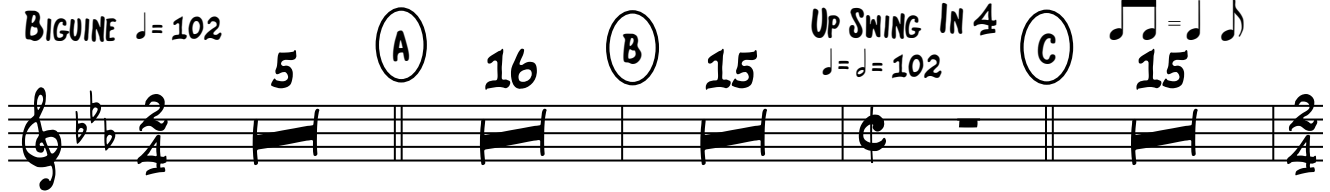
CHANSON DU CARNAVAL 1922

PAROLES : M. RONDELLY ET A. FENOUILLE

MUSIQUE : HIACYNTHÉ TARELLI

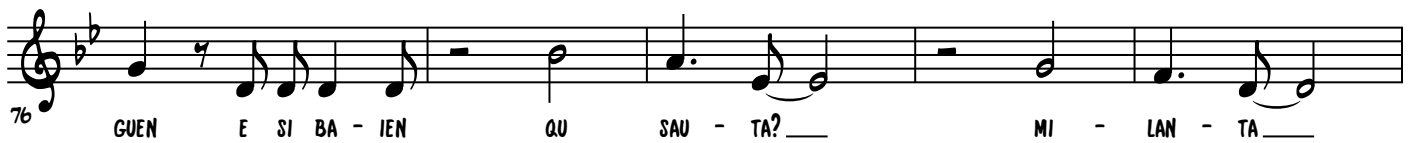
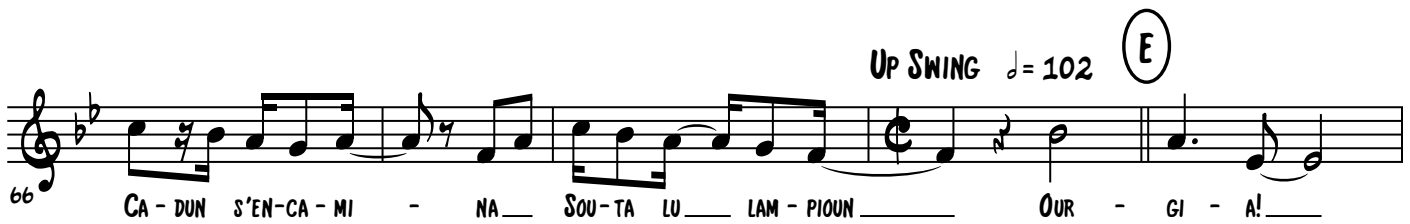
ARR. FRED D'HULSTER

BIGUINE  $\text{♩} = 102$

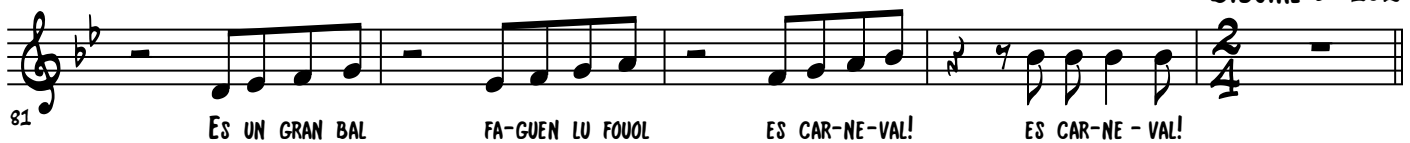


BIGUINE

$\text{♩} = 102$



BIGUINE  $\text{♩} = 102$



# VELOU VELOU VELOU

2



UP SWING  $\text{♩} = 102$

(H)



BIGUINE  $\text{♩} = 102$

(I)

OPEN SOLOS

STOP CHORUS

15

UP SWING  $\text{♩} = 102$

(J)

15



BIGUINE  $\text{♩} = 102$

STOP CHORUS

(K)

COUPLET 3



UP SWING  $\text{♩} = 102$

(L)





(M)



(N)

SHOUT



(BINAIRE)

