

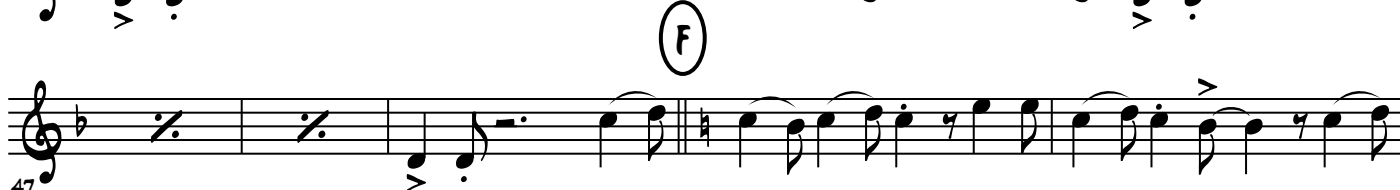
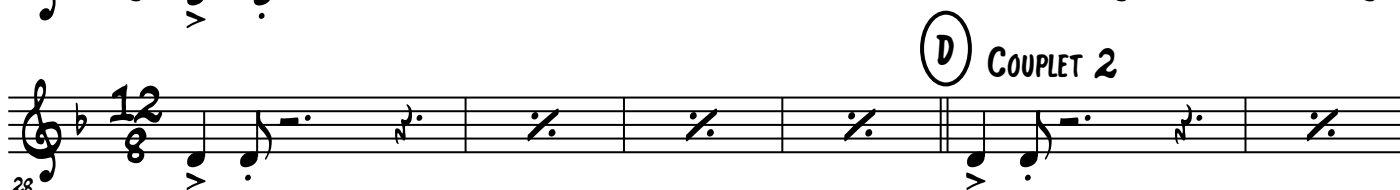
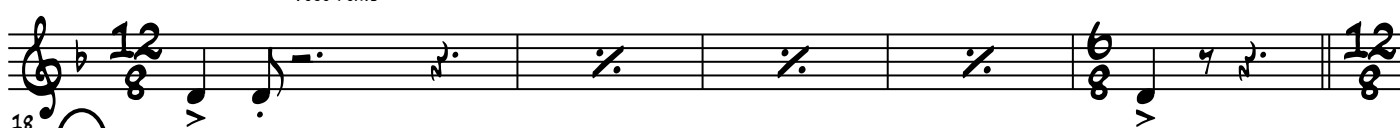
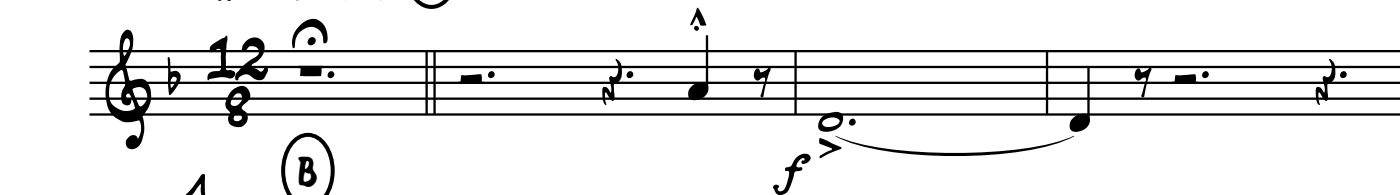
TENOR SAX. 2

LOU GIBOUS

TRADITIONNEL

ARR. FRED D'HULSTER

INTRO AD LIB. (A) CELTIC ROCK ♩ = 122



65 **(H)** COUPLET 5

f

73

STOP CHORUS **(I)** OPEN SOLOS

77 LAY BACK (OPTIONNAL)

82 **(J)** COUPLET 6 **(K)** COUPLET 7 **(L)** COUPLET 8

VERY SLOW $\text{♩} = 58$ TEMPO PRIMO $\text{♩} = 122$

107

112 **(M)** COUPLET 9

116

121 **(N)**

125

129